

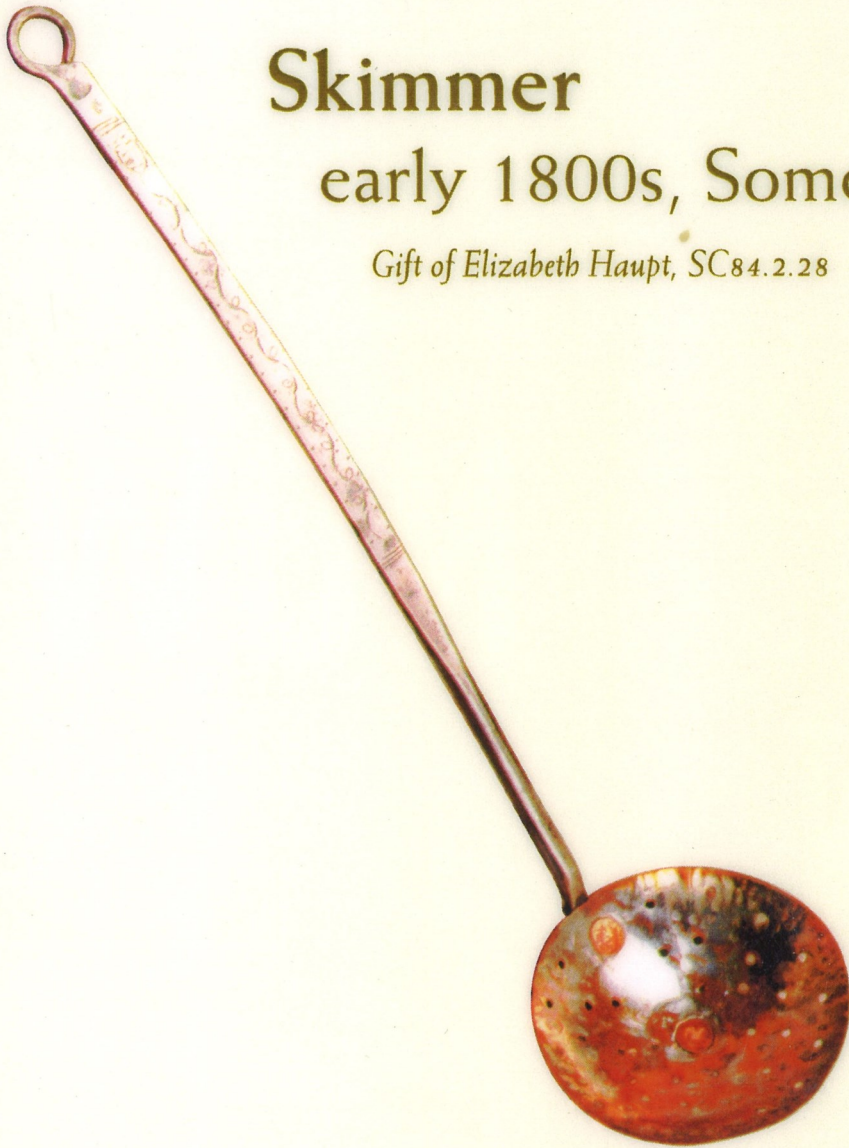
THEN & NOW  
THEN & NOW



# Skimmer

early 1800s, Somerset County

*Gift of Elizabeth Haupt, SC84.2.28*



# THEN

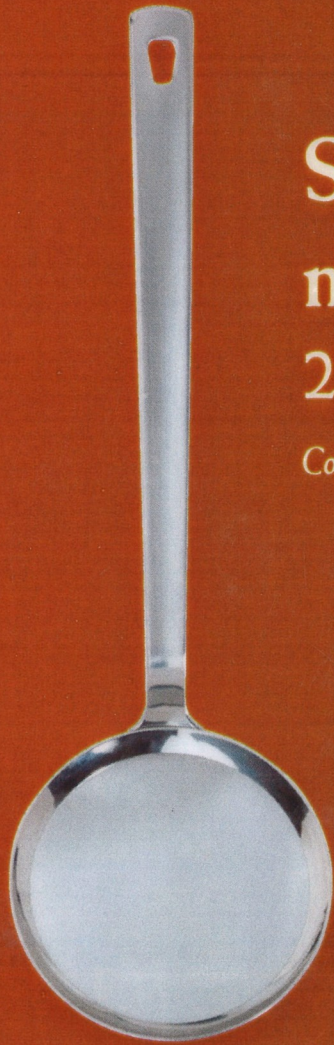
# Meat fork

1766, Pennsylvania

*Gift of Elizabeth Haupt, SC84.2.21*







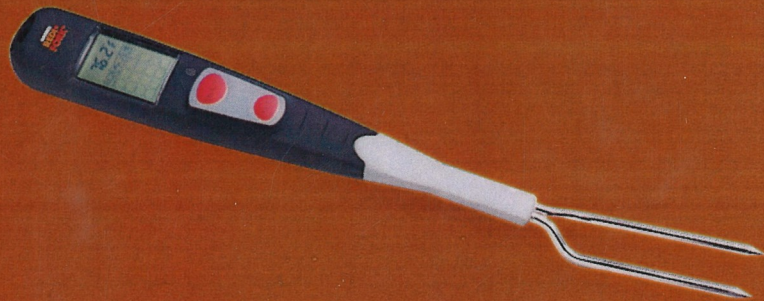
**Stainless-steel  
mesh skimmer  
2001**

*Courtesy Williams-Sonoma*

**NOW**

**Digital meat fork  
with thermometer  
2001**

*Courtesy Spiegel*



**ESTATE SALE**





Meat grinder  
1800s,  
Somerset County

*Gift of Elizabeth Haupt, SC84.2.102a-b*

THEN

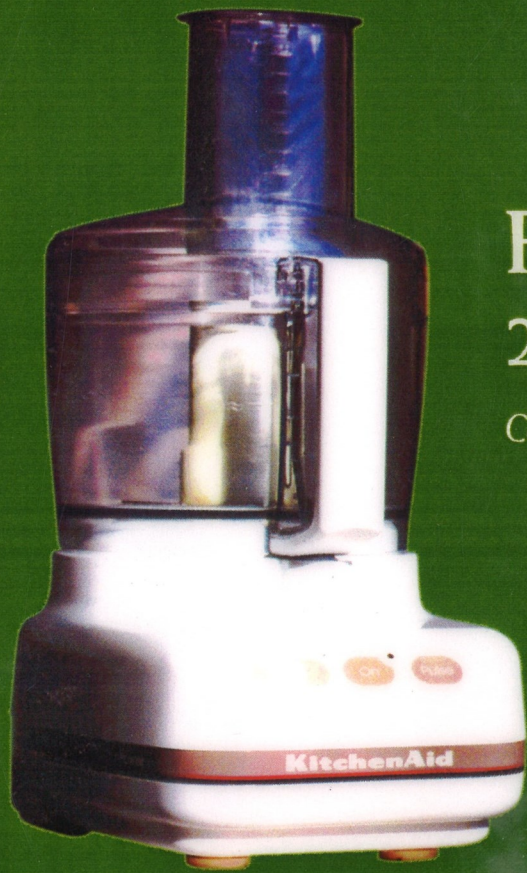


Gridiron

1700s, Somerset County

*Gift of Elizabeth Haupt, SC84.2.14*

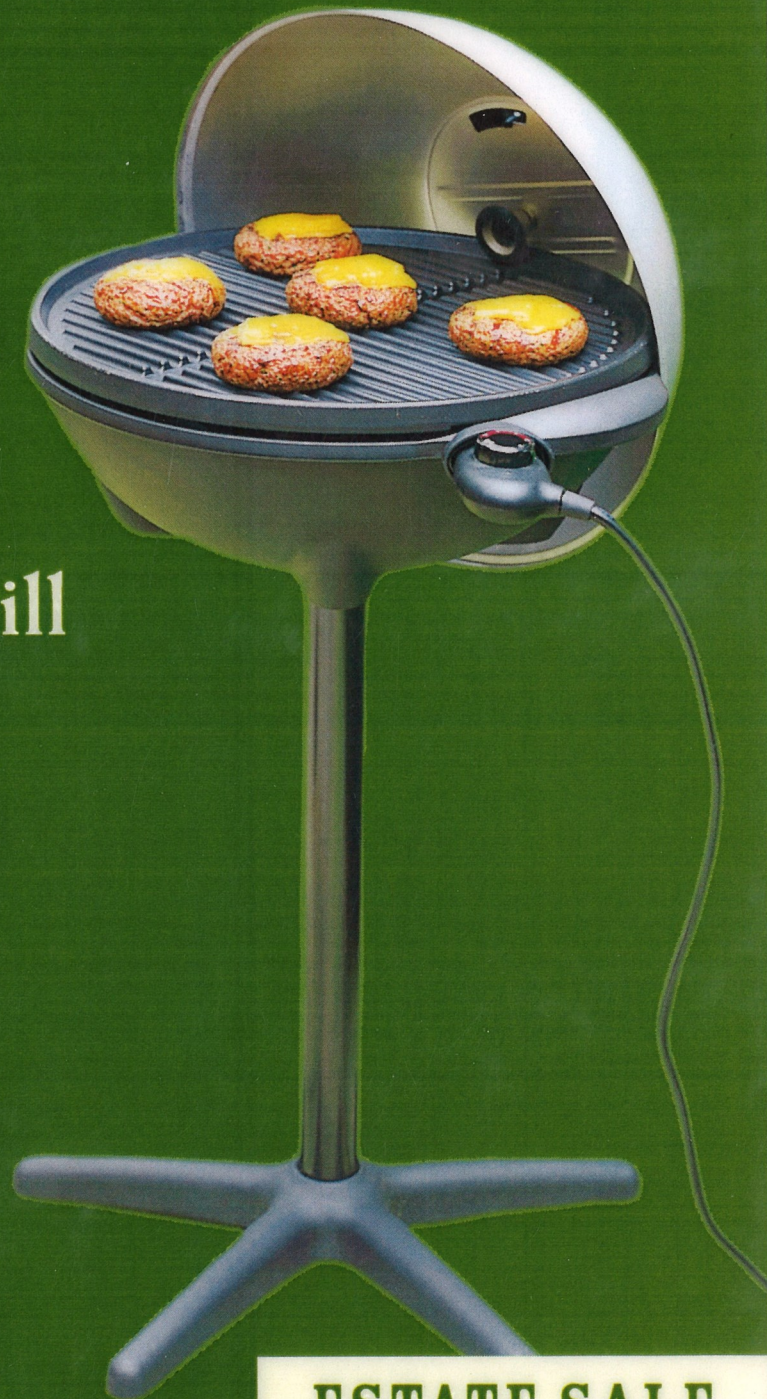




# Food processor

## 2001

*Courtesy Dianne Doty*



# Electric grill

## 2001

*Courtesy Spiegel*

# NOW

**ESTATE SALE**



# Ladle

1800s, Somerset County

*Gift of Elizabeth Haupt, SC84.2.22*



Chain trammel,  
to suspend a pot  
over the fire

1800s,

Berks County, Pennsylvania

*Gift of David Dunn, SC99.4.1*



T  
H  
E  
N

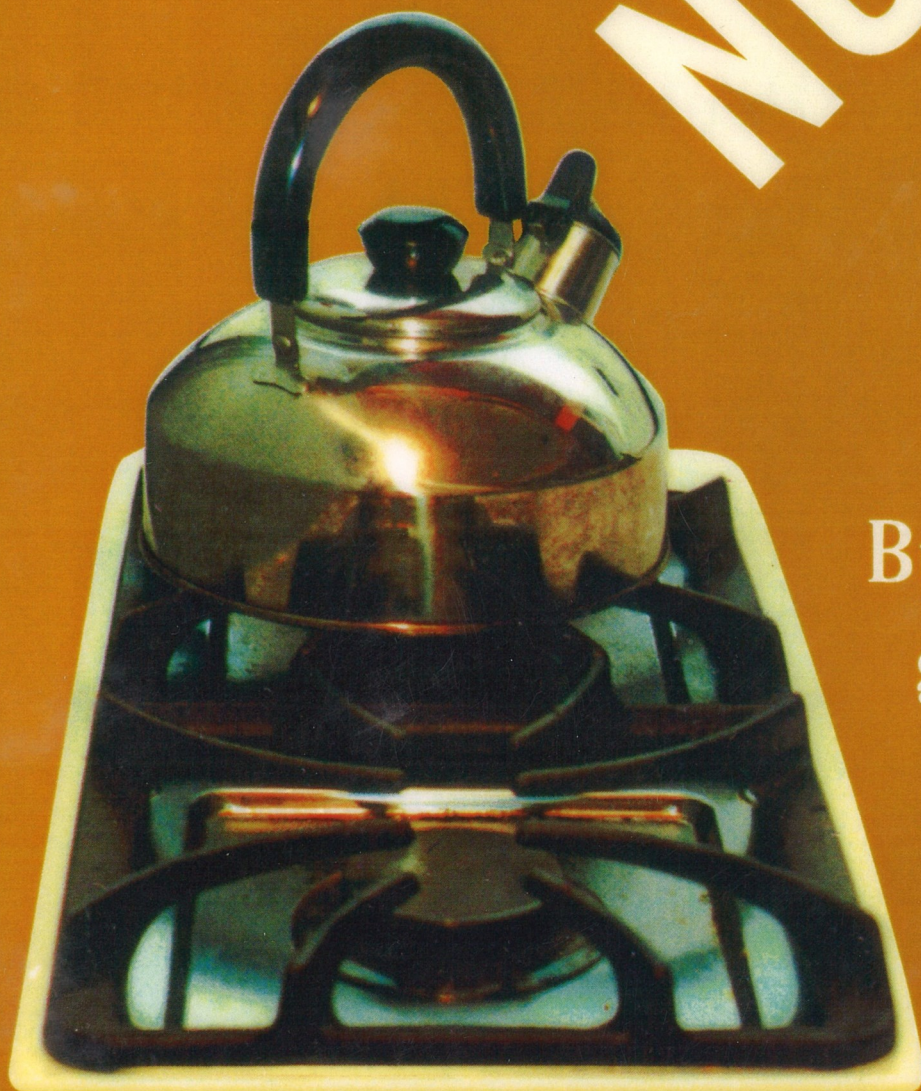


Stainless-steel  
nonstick ladle  
2001

*Courtesy Williams-Sonoma*



**NOW**



Burner of  
gas stove  
2001

*Courtesy Interpretive Solutions*

**ESTATE SALE**



# THEN



## Utensil rest

late 1700s-early 1800s,  
Somerset County

*HS1991.97.82*



Peel blade,  
used to lift bread and  
baked goods in and  
out of a bake oven  
late 1700s-early 1800s,  
Somerset County  
(The peel would have had  
a long wooden handle.)

*Gift of Elizabeth Haupt, SC84.2.18*



# Magnetic utensil holder and knife block

2001

*Courtesy Spiegel*



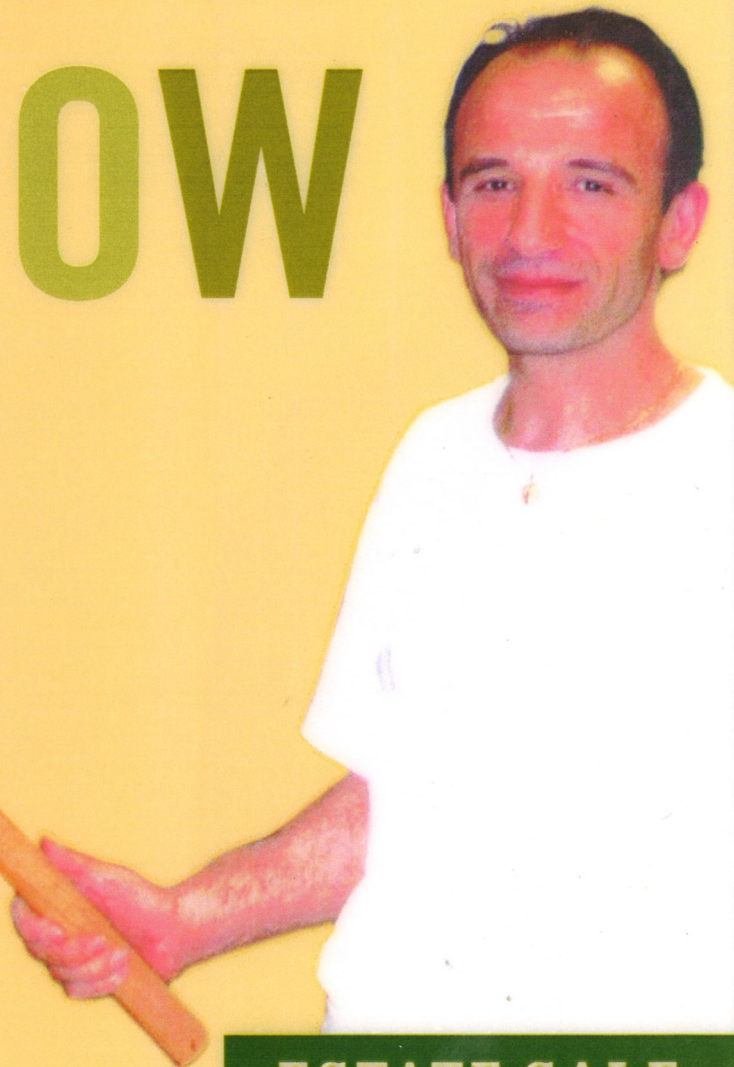
# NOW



# Pizza shovel

2001

*Courtesy Lucio's Specialty Pizza,  
Pleasantville, New York*



**ESTATE SALE**



# Goat bell, to keep track of the "kid" 1800s, Somerset County

*Gift of Elizabeth Haupt, SC84.2.32*



# Grain shovel 1800s, Somerset County

*HS1991.97.27*



T  
H  
E  
N



# Child's beeper, to keep track of the kid 2001

*Courtesy Jess Young*



# NOW

# Grain auger 2001

*Courtesy of Buhler Industries, Inc.*



**ESTATE SALE**



Fireback, used  
to reflect heat  
from the fireplace  
into the room  
1700s, eastern  
Pennsylvania

*Gift of John T. Morris, SC91.2.1.*

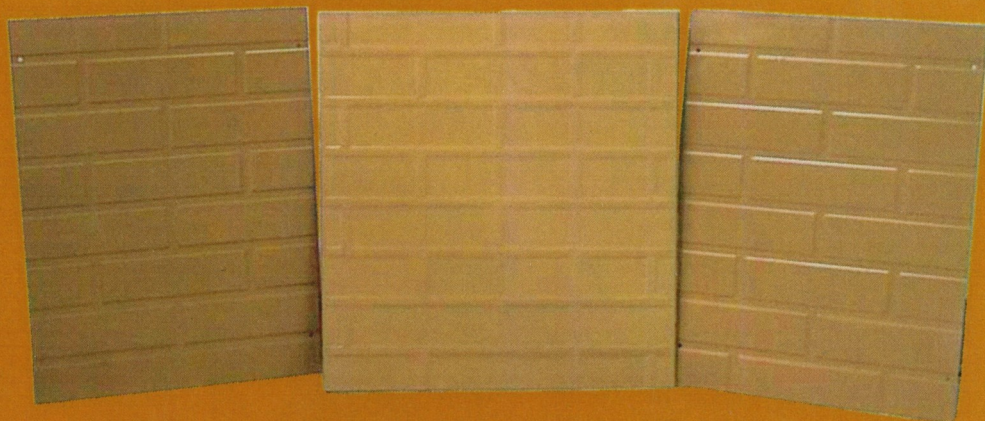


Side chair  
late 1700s,  
Pennsylvania

*Gift of Elizabeth Haupt, SC84.2.134*



Modern  
fireplace  
fireback  
2001



*Courtesy Hoffman Fireplaces and Mantles*



**MOM**

Chair  
2001

*Courtesy Interpretive Solutions*

**ESTATE SALE**



Swivel rack for drying clothes  
late 1700s, Somerset County

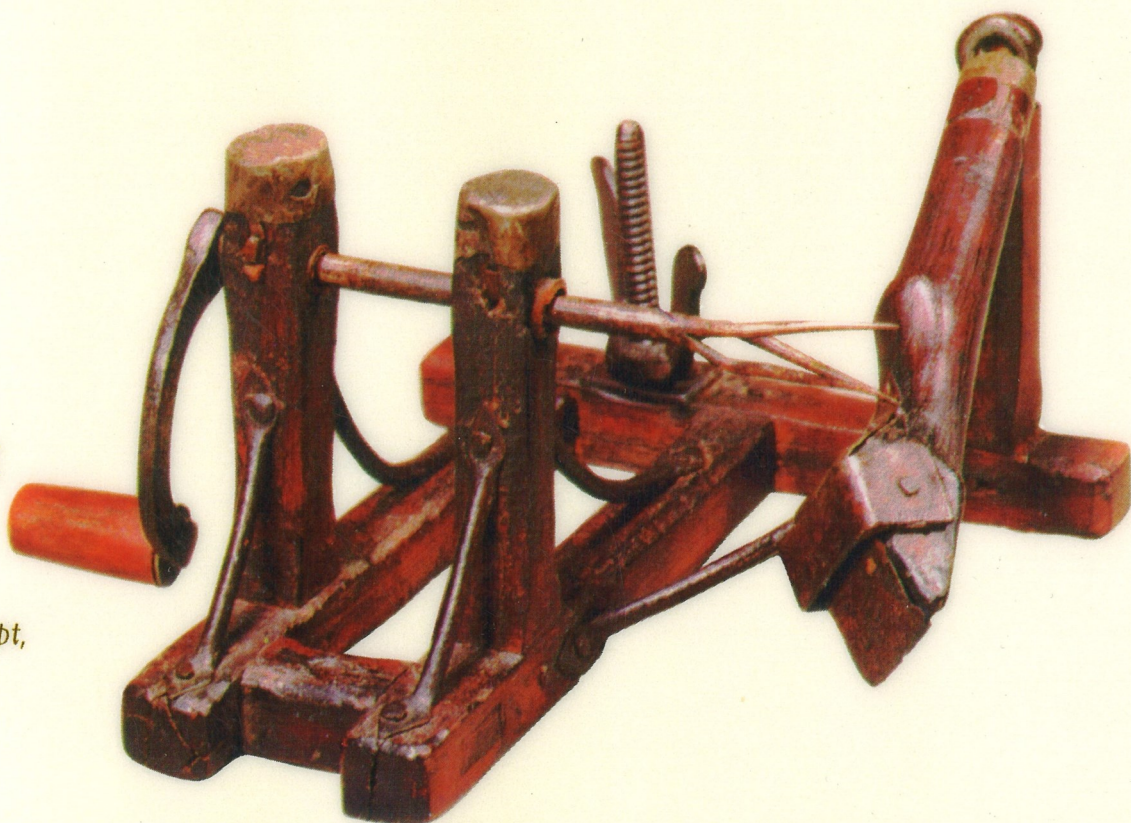
*Gift of Mark Ware, SC2000.2.1*



THEN

Apple  
peeler  
1800s,  
Somerset  
County

*Gift of Elizabeth Haupt,  
SC84.2.35*







# Clothes dryer 2001

*Courtesy Interpretive Solutions*

**MOM**

# Store-bought apple butter 2001

*Courtesy Interpretive Solutions*



**ESTATE SALE**





Fruit drying rack  
1800s, Somerset County

*Gift of Elizabeth Haupt, SC84.2.137*

**THEN**



Redware  
bowl  
from local clay  
early 1800s,  
Somerset County

*Gift of Elizabeth Haupt, SC84.2.19*

**THEN**



Store-bought  
dried apples  
2001

*Courtesy Interpretive Solutions*



**NOW**

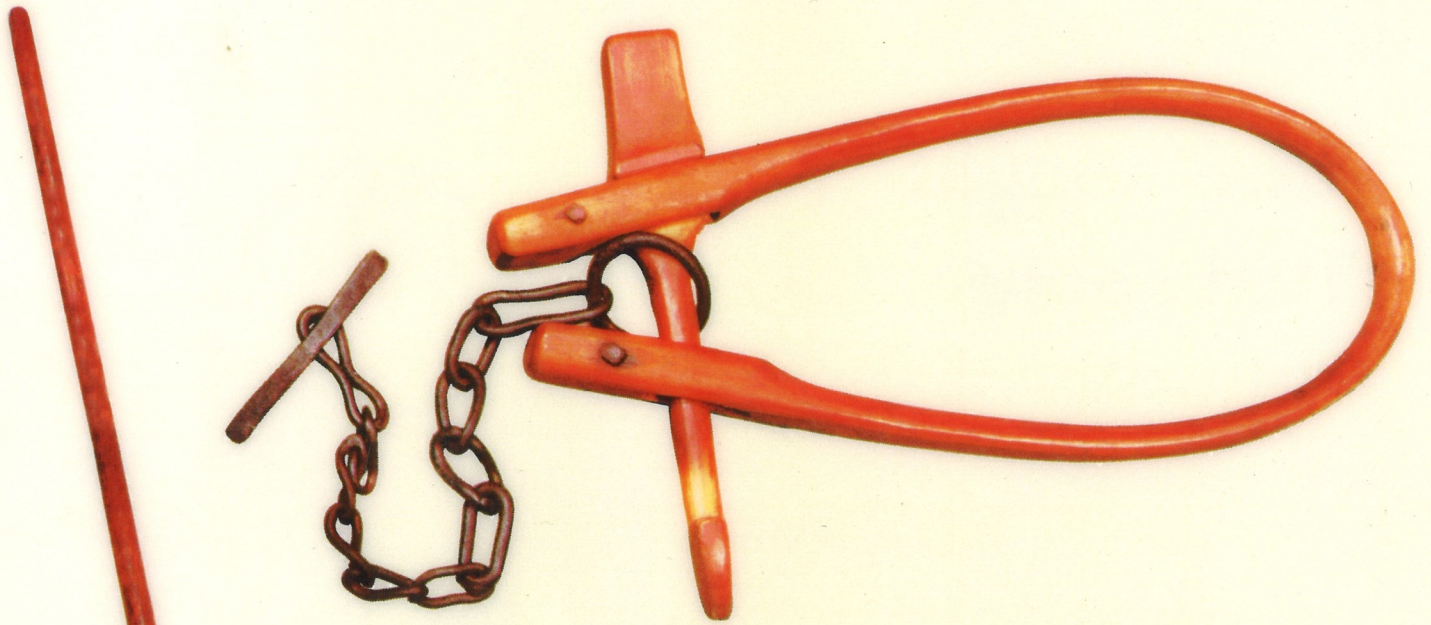
Plastic bowl  
2001

*Courtesy Interpretive Solutions*



**ESTATE SALE**





**Animal restrainer**  
1800s, Somerset County

*SC2000.1.3a-c*

**Rake**  
1800s, Somerset County

*Gift of Elizabeth Haupt, SC84.2.9*





# Electronic dog collar 2001

*Courtesy IFCO Enterprises, Inc.*



# Leaf blower 2001

*Courtesy Home Depot*



NO W

**ESTATE SALE**



# THEN



Bake oven,  
used for baking  
over hot coals  
late 1700s,  
Uniontown,  
Pennsylvania

*Gift of Frederic Coldren, SC99.2.5a-b*

Slow cooker  
2001

*Courtesy Spiegel*



# NOW

