

DAIRY COWS:

Most Somerset County farmers kept nine or ten milking cows. Some farmers improved the stock of their dairy herd through selective breeding. By breeding only the cows that were the best milk producers with bulls of improved breeds, the next generation of calves grew up to be good milkers, too.



Other farmers purchased improved dairy stock to cross breed with their existing herds.

Improved cattle
From the Somerset Herald,
August 24, 1830.

Certificate for Victoria, a heifer calf

Courtesy
Pennsylvania
State University
Archives

Sale of Improved Durham Short-Horned Cattle.

HAVING obtained from the recent sale at Powelton, a change of breeding stock, I will offer at public sale at my farm, 1½ mile north of Greensburgh, on Wednesday, the 22d of September next, my full blooded Bull SULTAN. He will be four years old on the 27th of December next, and is a very large and beautiful animal.

Also, 7 half blooded Bull calves, of various ages, from 1 to 10 months, the produce of Sultan, and of cows distinguished for their fine milking properties.

Also, several fine cows with calf to Sultan; and a YOUNG BULL nearly full-blooded, the produce of a remarkable Heifer.

Also,
2 blooded Breeding Mares,
by Davidson's 'Godolphin', one of which is in foal to the thorough bred horse 'Napoleon.' They are both desirable animals. The pedigrees of each will be given in full on the day of sale.

August 24, 1830. F. J. Cope.

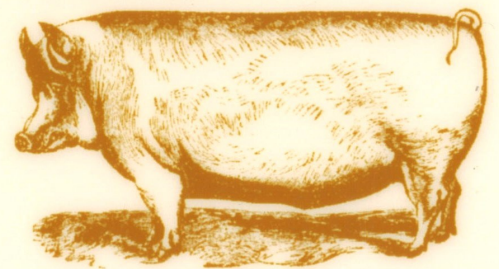
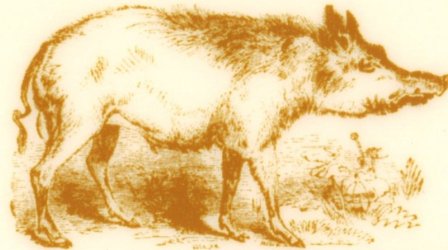
Victoria (U.S.A.)

Purchased by Tho M
Hearsey 3rd Mo 1862 from
Genl B. Hinman of
West Chester. — with the
following history
Heifer calf. Yellow, Red &
White ¼ Alderney ¼ Devon
Grand Dam ½ Alderney &
½ Devon
Its dam is ¾ Alderney &
¼ Devon & was sired by
Chieftain, a thorough bred
Alderney Bull — Victoria
was sired by Hector, from
stock imported by the
Massachusetts Agricultural
Society
Purchased by Experimental
Farm 2nd Mo 1868 — Price \$100.00

HOGS & POULTRY:

During the 1800s Somerset County farmers on average kept eight to ten hogs.

Improved breeds were introduced from England in the 1790s. Their blood lines replaced the scrawny animals owned by the early settlers with more productive ones.



Improving hogs

Courtesy Cygnus Business Media.

I. COMMON BARN FOWLS.

VARIETIES.

Fig. 227.



Common Barn Fowl Variations

From *The Farmer's New & Universal Handbook*, 1854.

Courtesy of the New York Public Library

Most Somerset County farmers raised chickens, and some kept a few ducks and turkeys. Poultry provided meat and eggs for the table and extra income. The farmwife and children took care of the poultry and prepared eggs for market.

PUBLIC ENTERTAINMENT.

SIGN OF THE

GOLDEN SWAN

IN SOMERSET, PA.

THE SUBSCRIBER

RESPECTFULLY informs the public that he has again removed to the
TAVERN STAND

formerly occupied by him, and latterly by WILLIAM PHILSON, on the South side of Main-street, in Somerset borough, where he is prepared to accommodate

**TRAVELLERS. WAGGONERS, DROVERS
AND OTHERS,**

In the very best style. No pains or attention shall be spared to render comfortable, those who may choose to patronise him. His **BAR** will be furnished with the best **LIQUORS** that can be produced. His **HOUSE** is large, comfortable and commodious, his **Stabling** good and well attended to.

ISAAC ANKENY.

SOMERSET, April 2, 1822.

N. B. Jurors and others attending court, will be comfortably entertained.

The Golden Swan Tavern

*From the Somerset Herald & Whig,
April 4, 1832.*

eastern markets, sometimes from as far away as Ohio. They bought more stock from farmers as they passed through. Drovers' inns or "tavern stands" along the turnpikes housed and fed the men and pastured the livestock.

A MARKET FOR MEAT:

The number of beef cattle grew dramatically in the 1850s and 1860s. Surplus livestock was a source of cash because of market demand locally and in cities in the Northeastern states. Drovers hired by eastern stock agents drove large herds of horses, pigs, sheep, and cattle to



A Merino ram

Courtesy of Cygnus Business Media

SHEEP:

In the 1840s Somerset County farmers raised enough sheep to support 15 wool carding and fulling mills. Carding mills combed the wool

before spinning; fulling mills put the finishing touches on woven cloth. By the late 1800s many farmers increased the wool yield of their flocks by interbreeding their stock with purebred sheep like Merinos. Merinos produced excellent wool.



*Shepherdess with
Sheep and Child*

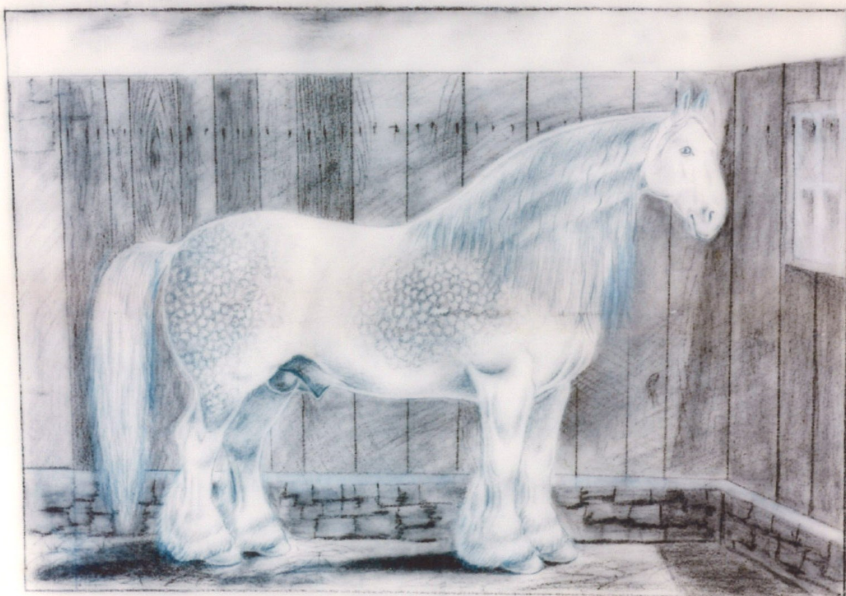
n.d., oil on canvas
painting by
Alfred B. Wall

Courtesy of The
Westmoreland Museum
of American Art,
Greensburg, PA.

HORSES:

Virtually all Somerset County farmers had horses. Before 1840, the average number of horses per farm was two. By 1880, with so much new horse-drawn machinery in use, the average was four or five horses. For personal travel, many people could now afford carriages and carriage horses to pull them.

Local fairs awarded prizes for matched teams, walking, trotting, and running horses, and light and heavy draft horses. In April 1880, the Philadelphia Press declared Somerset County "the great horse-producing county of western Pennsylvania."



Lord Inverurie

Somerset County

Pencil and ink drawing on paper
by Betty McCloy, 1881

*PETER HEFFLEY & CO. OWNERS,
[Drawn] From Life By Betty McCloy.
This Clydesdale Stallion was Imported
from Scotland and weighs 2440 pounds.
Will be on Exhibition in Somerset Aug term
of Court. Will stand at my Farm during
the month of September. . . . P. Heffley,
April 18, 1881.*

HS2000.1.1